

---

**Product Name: alpha Internexin Rabbit Polyclonal Antibody****Catalog #: APRab00313**

For research use only.

**Summary**

<b>Description</b>	Rabbit polyclonal Antibody
<b>Host</b>	Rabbit
<b>Application</b>	WB,IHC,ICC/IF,FC,IP
<b>Reactivity</b>	Human,Mouse,Rat
<b>Conjugation</b>	Unconjugated
<b>Modification</b>	Unmodified
<b>Isotype</b>	IgG
<b>Clonality</b>	Polyclonal
<b>Form</b>	Liquid
<b>Concentration</b>	1mg/ml
<b>Storage</b>	Aliquot and store at -20°C (valid for 12 months). Avoid freeze/thaw cycles.
<b>Shipping</b>	Ice bags
<b>Buffer</b>	Rabbit IgG in phosphate buffered saline , pH 7.4, 150mM NaCl, 0.02% sodium azide and 50% glycerol.
<b>Purification</b>	Affinity Chromatography

**Application**

<b>Dilution Ratio</b>	WB 1:500-1:1000,IHC 1:50-1:100,ICC/IF 1:50-1:200,FC 1:50-1:100,IP 1:20-1:50
<b>Molecular Weight</b>	Calculated MW: 55 kDa; Observed MW: 60 kDa

**Antigen Information**

<b>Gene Name</b>	INA
<b>Alternative Names</b>	INA; NEF5; Alpha-internexin; Alpha-Inx; 66 kDa neurofilament protein; NF-66; Neurofilament-66; Neurofilament 5
<b>Gene ID</b>	9118
<b>SwissProt ID</b>	Q16352
<b>Immunogen</b>	A synthetic peptide of human alpha Internexin

**Background**

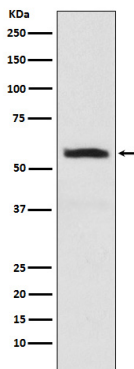
Class-IV neuronal intermediate filament that is able to self-assemble. It is involved in the morphogenesis of neurons. It may

form an independent structural network without the involvement of other neurofilaments or it may cooperate with NF-L to form the filamentous backbone to which NF-M and NF-H attach to form the cross-bridges.

## Research Area

Cell Biology

## Image Data



Western blot analysis of alpha Internexin in SH-SY5Y lysates using alpha Internexin antibody.