

---

**Product Name: SATB2 Rabbit Polyclonal Antibody****Catalog #: APRab00307**

For research use only.

**Summary**

<b>Description</b>	Rabbit polyclonal Antibody
<b>Host</b>	Rabbit
<b>Application</b>	WB,IHC
<b>Reactivity</b>	Human
<b>Conjugation</b>	Unconjugated
<b>Modification</b>	Unmodified
<b>Isotype</b>	IgG
<b>Clonality</b>	Polyclonal
<b>Form</b>	Liquid
<b>Concentration</b>	1mg/ml
<b>Storage</b>	Aliquot and store at -20°C (valid for 12 months). Avoid freeze/thaw cycles.
<b>Shipping</b>	Ice bags
<b>Buffer</b>	Rabbit IgG in phosphate buffered saline , pH 7.4, 150mM NaCl, 0.02% sodium azide and 50% glycerol.
<b>Purification</b>	Affinity Chromatography

**Application**

<b>Dilution Ratio</b>	WB 1:500-1:1000,IHC 1:50-1:100
<b>Molecular Weight</b>	Calculated MW: 83 kDa; Observed MW: 83 kDa

**Antigen Information**

<b>Gene Name</b>	SATB2
<b>Alternative Names</b>	GLSS; SATB family member 2; SATB homeobox 2; SATB2; Special AT rich sequence binding protein 2
<b>Gene ID</b>	23314
<b>SwissProt ID</b>	Q9UPW6
<b>Immunogen</b>	A synthetic peptide of human SATB2

**Background**

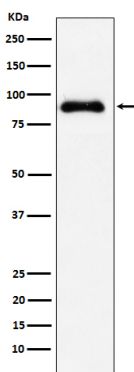
Binds to DNA, at nuclear matrix- or scaffold-associated regions. Thought to recognize the sugar-phosphate structure of

double-stranded DNA. Transcription factor controlling nuclear gene expression, by binding to matrix attachment regions (MARs) of DNA and inducing a local chromatin-loop remodeling. Acts as a docking site for several chromatin remodeling enzymes and also by recruiting corepressors (HDACs) or coactivators (HATs) directly to promoters and enhancers.

## Research Area

Neuroscience

## Image Data



Western blot analysis of SATB2 in HT-1080 lysates using SATB2 antibody.