
Product Name: Cullin 4A Rabbit Polyclonal Antibody**Catalog #: APRab00303**

For research use only.

Summary

| | |
|----------------------|--|
| Description | Rabbit polyclonal Antibody |
| Host | Rabbit |
| Application | WB,IHC,ICC/IF,FC,IP |
| Reactivity | Human |
| Conjugation | Unconjugated |
| Modification | Unmodified |
| Isotype | IgG |
| Clonality | Polyclonal |
| Form | Liquid |
| Concentration | 1mg/ml |
| Storage | Aliquot and store at -20°C (valid for 12 months). Avoid freeze/thaw cycles. |
| Shipping | Ice bags |
| Buffer | Rabbit IgG in phosphate buffered saline , pH 7.4, 150mM NaCl, 0.02% sodium azide and 50% glycerol. |
| Purification | Affinity Chromatography |

Application

| | |
|-------------------------|---|
| Dilution Ratio | WB 1:500-1:1000,IHC 1:50-1:100,ICC/IF 1:50-1:200,FC 1:50-1:100,IP 1:20-1:50 |
| Molecular Weight | Calculated MW: 88 kDa; Observed MW: 88 kDa |

Antigen Information

| | |
|--------------------------|---|
| Gene Name | CUL4A |
| Alternative Names | Cul4a; Cullin-4A |
| Gene ID | 8451 |
| SwissProt ID | Q13619 |
| Immunogen | A synthetic peptide of human Cullin 4A/CUL-4A |

Background

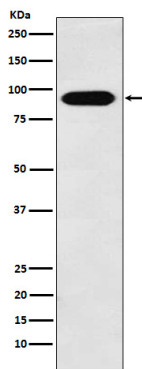
Core component of multiple cullin-RING-based E3 ubiquitin-protein ligase complexes which mediate the ubiquitination and subsequent proteasomal degradation of target proteins. As a scaffold protein may contribute to catalysis through positioning

of the substrate and the ubiquitin-conjugating enzyme.

Research Area

Cell Biology

Image Data



Western blot analysis of Cullin 4a in HeLa lysates using Cullin 4A antibody.