
Product Name: PKC theta Rabbit Polyclonal Antibody**Catalog #: APRab00300**

For research use only.

Summary

Description	Rabbit polyclonal Antibody
Host	Rabbit
Application	WB
Reactivity	Human, Mouse, Rat
Conjugation	Unconjugated
Modification	Unmodified
Isotype	IgG
Clonality	Polyclonal
Form	Liquid
Concentration	1mg/ml
Storage	Aliquot and store at -20°C (valid for 12 months). Avoid freeze/thaw cycles.
Shipping	Ice bags
Buffer	Rabbit IgG in phosphate buffered saline , pH 7.4, 150mM NaCl, 0.02% sodium azide and 50% glycerol.
Purification	Affinity Chromatography

Application

Dilution Ratio	WB 1:500-1:1000
Molecular Weight	Calculated MW: 82 kDa; Observed MW: 82 kDa

Antigen Information

Gene Name	PRKCQ
Alternative Names	PRKCQ; PRKCT; Protein kinase C theta type; nPKC-theta
Gene ID	5588
SwissProt ID	Q04759
Immunogen	A synthetic peptide of human PKC theta/PRKCQ

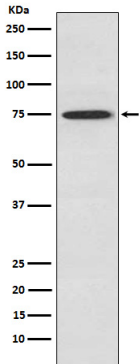
Background

This is a calcium-independent, phospholipid-dependent, serine- and threonine-specific enzyme. Essential for T-cell receptor (TCR)-mediated T-cell activation, but is dispensable during TCR-dependent thymocyte development.

Research Area

Signal Transduction

Image Data



Western blot analysis of PKC theta in Jurkat lysates using PKC theta antibody.