
Product Name: DDAH1 Rabbit Polyclonal Antibody**Catalog #: APRab00289**

For research use only.

Summary

Description	Rabbit polyclonal Antibody
Host	Rabbit
Application	WB,IHC,ICC/IF,FC,IP
Reactivity	Human,Mouse,Rat
Conjugation	Unconjugated
Modification	Unmodified
Isotype	IgG
Clonality	Polyclonal
Form	Liquid
Concentration	1mg/ml
Storage	Aliquot and store at -20°C (valid for 12 months). Avoid freeze/thaw cycles.
Shipping	Ice bags
Buffer	Rabbit IgG in phosphate buffered saline , pH 7.4, 150mM NaCl, 0.02% sodium azide and 50% glycerol.
Purification	Affinity Chromatography

Application

Dilution Ratio	WB 1:500-1:1000,IHC 1:50-1:100,ICC/IF 1:50-1:200,FC 1:50-1:100,IP 1:20-1:50
Molecular Weight	Calculated MW: 31 kDa; Observed MW: 37 kDa

Antigen Information

Gene Name	DDAH1
Alternative Names	DDAH; DDAHI; DDAH-1; HEL-S-16
Gene ID	23576
SwissProt ID	O94760
Immunogen	A synthetic peptide of human DDAH1

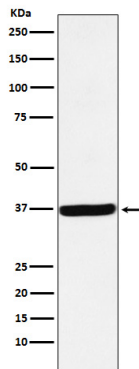
Background

Hydrolyzes N(G),N(G)-dimethyl-L-arginine (ADMA) and N(G)-monomethyl-L-arginine (MMA) which act as inhibitors of NOS. Has therefore a role in the regulation of nitric oxide generation.

Research Area

Neuroscience

Image Data



Western blot analysis of DDAH1 in 293 lysates using DDAH1 antibody.