
Product Name: RRM2 Rabbit Polyclonal Antibody**Catalog #: APRab00288**

For research use only.

Summary

Description	Rabbit polyclonal Antibody
Host	Rabbit
Application	WB,ICC/IF,IP
Reactivity	Human
Conjugation	Unconjugated
Modification	Unmodified
Isotype	IgG
Clonality	Polyclonal
Form	Liquid
Concentration	1mg/ml
Storage	Aliquot and store at -20°C (valid for 12 months). Avoid freeze/thaw cycles.
Shipping	Ice bags
Buffer	Rabbit IgG in phosphate buffered saline , pH 7.4, 150mM NaCl, 0.02% sodium azide and 50% glycerol.
Purification	Affinity Chromatography

Application

Dilution Ratio	WB 1:500-1:1000,ICC/IF 1:50-1:200,IP 1:20-1:50
Molecular Weight	Calculated MW: 45 kDa; Observed MW: 45 kDa

Antigen Information

Gene Name	RRM2
Alternative Names	R2; RR2M
Gene ID	6241
SwissProt ID	P31350
Immunogen	Recombinant protein of human RRM2

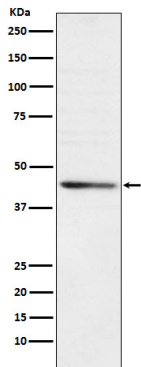
Background

Provides the precursors necessary for DNA synthesis. Catalyzes the biosynthesis of deoxyribonucleotides from the corresponding ribonucleotides. Inhibits Wnt signaling.

Research Area

Epigenetics and Nuclear Signaling

Image Data



Western blot analysis of RRM2 in HeLa lysates using RRM2 antibody.