
Product Name: ALDOA Rabbit Polyclonal Antibody**Catalog #: APRab00286**

For research use only.

Summary

| | |
|----------------------|--|
| Description | Rabbit polyclonal Antibody |
| Host | Rabbit |
| Application | WB,IHC,ICC/IF |
| Reactivity | Human,Mouse,Rat |
| Conjugation | Unconjugated |
| Modification | Unmodified |
| Isotype | IgG |
| Clonality | Polyclonal |
| Form | Liquid |
| Concentration | 1mg/ml |
| Storage | Aliquot and store at -20°C (valid for 12 months). Avoid freeze/thaw cycles. |
| Shipping | Ice bags |
| Buffer | Rabbit IgG in phosphate buffered saline , pH 7.4, 150mM NaCl, 0.02% sodium azide and 50% glycerol. |
| Purification | Affinity Chromatography |

Application

| | |
|-------------------------|--|
| Dilution Ratio | WB 1:500-1:1000,IHC 1:50-1:100,ICC/IF 1:50-1:200 |
| Molecular Weight | Calculated MW: 39 kDa; Observed MW: 39 kDa |

Antigen Information

| | |
|--------------------------|--|
| Gene Name | ALDOA |
| Alternative Names | ALDOA; ALDA; Fructose-bisphosphate aldolase A; Lung cancer antigen NY-LU-1; Muscle-type aldolase |
| Gene ID | 226 |
| SwissProt ID | P04075 |
| Immunogen | A synthetic peptide of human Aldolase |

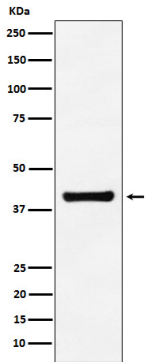
Background

Plays a key role in glycolysis and gluconeogenesis. In addition, may also function as scaffolding protein.

Research Area

Signal Transduction

Image Data



Western blot analysis of Aldolase in A549 lysates using ALDOA antibody.