
Product Name: Cullin 3 Rabbit Polyclonal Antibody**Catalog #: APRab00283**

For research use only.

Summary

Description	Rabbit polyclonal Antibody
Host	Rabbit
Application	WB,FC,IP
Reactivity	Human,Mouse,Rat
Conjugation	Unconjugated
Modification	Unmodified
Isotype	IgG
Clonality	Polyclonal
Form	Liquid
Concentration	1mg/ml
Storage	Aliquot and store at -20°C (valid for 12 months). Avoid freeze/thaw cycles.
Shipping	Ice bags
Buffer	Rabbit IgG in phosphate buffered saline , pH 7.4, 150mM NaCl, 0.02% sodium azide and 50% glycerol.
Purification	Affinity Chromatography

Application

Dilution Ratio	WB 1:500-1:1000,FC 1:50-1:100,IP 1:20-1:50
Molecular Weight	Calculated MW: 89 kDa; Observed MW: 89 kDa

Antigen Information

Gene Name	CUL3
Alternative Names	CUL3; KIAA0617; Cullin-3; CUL-3
Gene ID	8452
SwissProt ID	Q13618
Immunogen	A synthetic peptide of human Cullin 3

Background

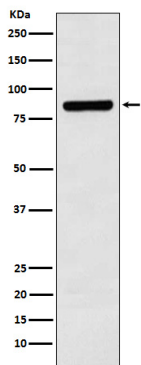
Core component of multiple cullin-RING-based BCR (BTB-CUL3-RBX1) E3 ubiquitin-protein ligase complexes which mediate the ubiquitination and subsequent proteasomal degradation of target proteins. As a scaffold protein may contribute to

catalysis through positioning of the substrate and the ubiquitin-conjugating enzyme.

Research Area

Cell Biology

Image Data



Western blot analysis of Cullin 3 in SH-SY5Y lysates using Cullin 3 antibody.