

---

**Product Name: STIP1 Rabbit Polyclonal Antibody****Catalog #: APRab00281**

For research use only.

**Summary**

<b>Description</b>	Rabbit polyclonal Antibody
<b>Host</b>	Rabbit
<b>Application</b>	WB,IHC,ICC/IF,FC,IP
<b>Reactivity</b>	Human,Mouse,Rat
<b>Conjugation</b>	Unconjugated
<b>Modification</b>	Unmodified
<b>Isotype</b>	IgG
<b>Clonality</b>	Polyclonal
<b>Form</b>	Liquid
<b>Concentration</b>	1mg/ml
<b>Storage</b>	Aliquot and store at -20°C (valid for 12 months). Avoid freeze/thaw cycles.
<b>Shipping</b>	Ice bags
<b>Buffer</b>	Rabbit IgG in phosphate buffered saline , pH 7.4, 150mM NaCl, 0.02% sodium azide and 50% glycerol.
<b>Purification</b>	Affinity Chromatography

**Application**

<b>Dilution Ratio</b>	WB 1:500-1:1000,IHC 1:50-1:100,ICC/IF 1:50-1:200,FC 1:50-1:100,IP 1:20-1:50
<b>Molecular Weight</b>	Calculated MW: 63 kDa; Observed MW: 63 kDa

**Antigen Information**

<b>Gene Name</b>	STIP1
<b>Alternative Names</b>	Hop; P60; STI1; STI1L; STIP1; Stress induced phosphoprotein 1
<b>Gene ID</b>	10963
<b>SwissProt ID</b>	P31948
<b>Immunogen</b>	A synthetic peptide of human STIP1

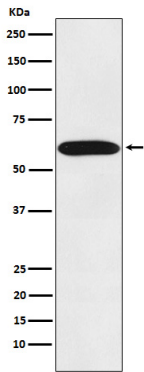
**Background**

Mediates the association of the molecular chaperones HSC70 and HSP90 (HSPCA and HSPCB).

## Research Area

Signal Transduction

## Image Data



Western blot analysis of STIP1 in Jurkat lysates using STIP1 antibody.