

Product Name: MBD2 Rabbit Polyclonal Antibody**Catalog #: APRab00280**

For research use only.

Summary

Description	Rabbit polyclonal Antibody
Host	Rabbit
Application	WB,IHC,ICC/IF,FC,IP
Reactivity	Human,Mouse,Rat
Conjugation	Unconjugated
Modification	Unmodified
Isotype	IgG
Clonality	Polyclonal
Form	Liquid
Concentration	1mg/ml
Storage	Aliquot and store at -20°C (valid for 12 months). Avoid freeze/thaw cycles.
Shipping	Ice bags
Buffer	Rabbit IgG in phosphate buffered saline , pH 7.4, 150mM NaCl, 0.02% sodium azide and 50% glycerol.
Purification	Affinity Chromatography

Application

Dilution Ratio	WB 1:500-1:1000,IHC 1:50-1:100,ICC/IF 1:50-1:200,FC 1:50-1:100,IP 1:20-1:50
Molecular Weight	Calculated MW: 43 kDa; Observed MW: 29,43 kDa

Antigen Information

Gene Name	MBD2
Alternative Names	Demethylase; DMTase; Mbd2; MBD2a
Gene ID	8932
SwissProt ID	Q9UBB5
Immunogen	A synthetic peptide of human MBD2

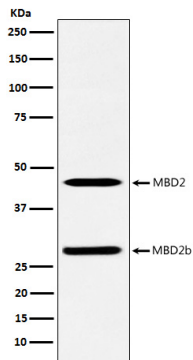
Background

Binds CpG islands in promoters where the DNA is methylated at position 5 of cytosine within CpG dinucleotides. Binds hemimethylated DNA as well. Recruits histone deacetylases and DNA methyltransferases.

Research Area

Epigenetics and Nuclear Signaling

Image Data



Western blot analysis of MBD2 in A375 lysates using MBD2 antibody.