

Product Name: SMYD3 Rabbit Polyclonal Antibody
Catalog #: APRab00276



Summary

Production Name	SMYD3 Rabbit Polyclonal Antibody
Description	Rabbit Polyclonal Antibody
Host	Rabbit
Application	WB,IHC-P,ICC/IF,FC,IP
Reactivity	Human,Mouse,Rat

Performance

Conjugation	Unconjugated
Modification	Unmodified
Isotype	IgG
Clonality	Polyclonal
Form	Liquid
Storage	Store at 4°C short term. Aliquot and store at -20°C long term. Avoid freeze/thaw cycles.
Buffer	Rabbit IgG in phosphate buffered saline , pH 7.4, 150mM NaCl, 0.02% sodium azide and 50% glycerol.
Purification	Affinity Chromatography

Immunogen

Gene Name	SMYD3
Alternative Names	KMT3E; ZMYND1; ZNFN3A1; bA74P14.1
Gene ID	64754
SwissProt ID	Q9H7B4.

Application

Dilution Ratio	WB: 1:500-1:1000 IHC: 1:50-1:100 IF: 1:50-1:200 IP: 1:20 FC: 1:50-1:100
Molecular Weight	Calculated MW: 49 kDa; Observed MW: 42 kDa

Background

Histone methyltransferase. Specifically methylates 'Lys-4' of histone H3, inducing di- and tri-methylation, but not

Product Name: SMYD3 Rabbit Polyclonal Antibody
Catalog #: APRab00276

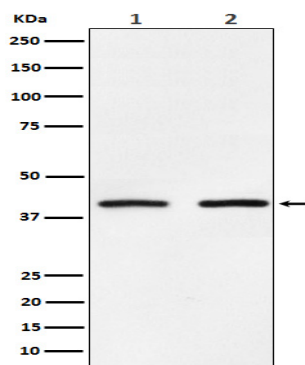


monomethylation. Plays an important role in transcriptional activation as a member of an RNA polymerase complex. Binds DNA containing 5'-CCCTCC-3' or 5'-GAGGGG-3' sequences.

Research Area

Epigenetics and Nuclear Signaling

Image Data



Western blot analysis of SMYD3 in (1) HeLa lysates; (2) NIH/3T3 lysates using SMYD3 antibody.

Note

For research use only.