
Product Name: SF2 Rabbit Polyclonal Antibody**Catalog #: APRab00273**

For research use only.

Summary

Description	Rabbit polyclonal Antibody
Host	Rabbit
Application	WB,IHC,ICC/IF,FC
Reactivity	Human,Mouse,Rat
Conjugation	Unconjugated
Modification	Unmodified
Isotype	IgG
Clonality	Polyclonal
Form	Liquid
Concentration	1mg/ml
Storage	Aliquot and store at -20°C (valid for 12 months). Avoid freeze/thaw cycles.
Shipping	Ice bags
Buffer	Rabbit IgG in phosphate buffered saline , pH 7.4, 150mM NaCl, 0.02% sodium azide and 50% glycerol.
Purification	Affinity Chromatography

Application

Dilution Ratio	WB 1:500-1:1000,IHC 1:50-1:100,ICC/IF 1:50-1:200,FC 1:50-1:100
Molecular Weight	Calculated MW: 28 kDa; Observed MW: 33 kDa

Antigen Information

Gene Name	SRSF1
Alternative Names	ASF; SF2; SFRS1; SF2p33; SRp30a
Gene ID	6426
SwissProt ID	Q07955
Immunogen	A synthetic peptide of human SF2

Background

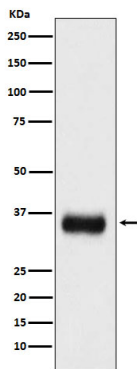
Plays a role in preventing exon skipping, ensuring the accuracy of splicing and regulating alternative splicing. Interacts with other spliceosomal components, via the RS domains, to form a bridge between the 5'- and 3'-splice site binding components,

U1 snRNP and U2AF.

Research Area

Epigenetics and Nuclear Signaling

Image Data



Western blot analysis of SF2 in mouse spleen lysates using SF2 antibody.