

Product Name: CD166 Rabbit Polyclonal Antibody**Catalog #: APRab00271**

For research use only.

Summary

Description	Rabbit polyclonal Antibody
Host	Rabbit
Application	WB,IHC,ICC/IF,FC,IP
Reactivity	Human,Mouse,Rat
Conjugation	Unconjugated
Modification	Unmodified
Isotype	IgG
Clonality	Polyclonal
Form	Liquid
Concentration	1mg/ml
Storage	Aliquot and store at -20°C (valid for 12 months). Avoid freeze/thaw cycles.
Shipping	Ice bags
Buffer	Rabbit IgG in phosphate buffered saline , pH 7.4, 150mM NaCl, 0.02% sodium azide and 50% glycerol.
Purification	Affinity Chromatography

Application

Dilution Ratio	WB 1:500-1:1000,IHC 1:50-1:100,ICC/IF 1:50-1:200,FC 1:50-1:100,IP 1:20-1:50
Molecular Weight	Calculated MW: 65 kDa; Observed MW: 100 kDa

Antigen Information

Gene Name	ALCAM
Alternative Names	ALCAM; MEMD; CD166 antigen; Activated leukocyte cell adhesion molecule; CD166
Gene ID	214
SwissProt ID	Q13740
Immunogen	A synthetic peptide of human CD166

Background

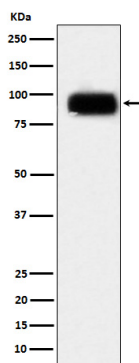
Cell adhesion molecule that binds to CD6. Involved in neurite extension by neurons via heterophilic and homophilic interactions. May play a role in the binding of T- and B-cells to activated leukocytes, as well as in interactions between cells of

the nervous system.

Research Area

Immunology

Image Data



Western blot analysis of CD166 in Daudi lysates using CD166 antibody.