

Product Name: SA2 Rabbit Polyclonal Antibody**Catalog #: APRab00264**

For research use only.

Summary

Description	Rabbit polyclonal Antibody
Host	Rabbit
Application	WB,IHC,ICC/IF,FC
Reactivity	Human,Mouse,Rat
Conjugation	Unconjugated
Modification	Unmodified
Isotype	IgG
Clonality	Polyclonal
Form	Liquid
Concentration	1mg/ml
Storage	Aliquot and store at -20°C (valid for 12 months). Avoid freeze/thaw cycles.
Shipping	Ice bags
Buffer	Rabbit IgG in phosphate buffered saline , pH 7.4, 150mM NaCl, 0.02% sodium azide and 50% glycerol.
Purification	Affinity Chromatography

Application

Dilution Ratio	WB 1:500-1:1000,IHC 1:50-1:100,ICC/IF 1:50-1:200,FC 1:50-1:100
Molecular Weight	Calculated MW: 141 kDa; Observed MW: 141 kDa

Antigen Information

Gene Name	STAG2
Alternative Names	SA 2; SA-2; SA2; SCC3 homolog 2; SCC3B; stag2; Stromal antigen 2
Gene ID	10735
SwissProt ID	Q8N3U4
Immunogen	Recombinant protein of human SA2

Background

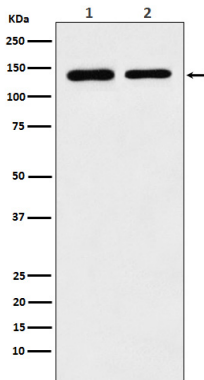
Component of cohesin complex, a complex required for the cohesion of sister chromatids after DNA replication. The cohesin complex apparently forms a large proteinaceous ring within which sister chromatids can be trapped. At anaphase, the complex

is cleaved and dissociates from chromatin, allowing sister chromatids to segregate.

Research Area

Cell Biology

Image Data



Western blot analysis of SA2 in (1) K562 lysates; (2) Raw264.7 lysates using SA2 antibody.