
Product Name: Aspartate Aminotransferase Rabbit Polyclonal Antibody**Catalog #: APRab00263**

For research use only.

Summary

Description	Rabbit polyclonal Antibody
Host	Rabbit
Application	WB,IHC,ICC/IF,FC
Reactivity	Human,Mouse,Rat
Conjugation	Unconjugated
Modification	Unmodified
Isotype	IgG
Clonality	Polyclonal
Form	Liquid
Concentration	1mg/ml
Storage	Aliquot and store at -20°C (valid for 12 months). Avoid freeze/thaw cycles.
Shipping	Ice bags
Buffer	Rabbit IgG in phosphate buffered saline , pH 7.4, 150mM NaCl, 0.02% sodium azide and 50% glycerol.
Purification	Affinity Chromatography

Application

Dilution Ratio	WB 1:500-1:1000,IHC 1:50-1:100,ICC/IF 1:50-1:200,FC 1:50-1:100
Molecular Weight	Calculated MW: 46 kDa; Observed MW: 46 kDa

Antigen Information

Gene Name	GOT1
Alternative Names	Aspartate aminotransferase; cytoplasmic; Glutamate oxaloacetate transaminase 1; Transaminase A
Gene ID	2805
SwissProt ID	P17174
Immunogen	A synthetic peptide of human Aspartate Aminotransferase

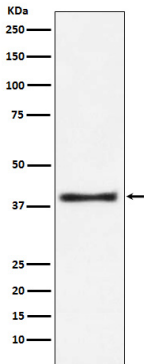
Background

Plays a key role in amino acid metabolism.

Research Area

Signal Transduction

Image Data



Western blot analysis of Aspartate Aminotransferase in MCF-7 lysates using Aspartate Aminotransferase antibody.