
Product Name: Macro H2A.1 Rabbit Polyclonal Antibody**Catalog #: APRab00262**

For research use only.

Summary

Description	Rabbit polyclonal Antibody
Host	Rabbit
Application	WB,IHC,ICC/IF
Reactivity	Human,Mouse,Rat
Conjugation	Unconjugated
Modification	Unmodified
Isotype	IgG
Clonality	Polyclonal
Form	Liquid
Concentration	1mg/ml
Storage	Aliquot and store at -20°C (valid for 12 months). Avoid freeze/thaw cycles.
Shipping	Ice bags
Buffer	Rabbit IgG in phosphate buffered saline , pH 7.4, 150mM NaCl, 0.02% sodium azide and 50% glycerol.
Purification	Affinity Chromatography

Application

Dilution Ratio	WB 1:500-1:1000,IHC 1:50-1:100,ICC/IF 1:50-1:200
Molecular Weight	Calculated MW: 40 kDa; Observed MW: 40 kDa

Antigen Information

Gene Name	MACROH2A1
Alternative Names	H2A.y; H2A/y; mH2A1; H2AF12M; MACROH2A1.1; macroH2A1.2
Gene ID	9555
SwissProt ID	O75367
Immunogen	A synthetic peptide of human macroH2A.1

Background

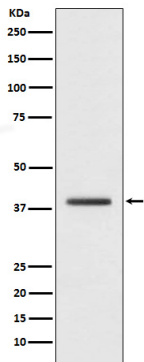
Involved in stable X chromosome inactivation. Inhibits the binding of transcription factors and interferes with the activity of remodeling SWI/SNF complexes. Inhibits histone acetylation by EP300 and recruits class I HDACs, which induces an

hypocetylated state of chromatin.

Research Area

Epigenetics and Nuclear Signaling

Image Data



Western blot analysis of macroH2A.1 in HepG2 lysates using Macro H2A.1 antibody.