

---

**Product Name: c-Rel Rabbit Polyclonal Antibody****Catalog #: APRab00261**

For research use only.

**Summary**

<b>Description</b>	Rabbit polyclonal Antibody
<b>Host</b>	Rabbit
<b>Application</b>	WB,IP
<b>Reactivity</b>	Human
<b>Conjugation</b>	Unconjugated
<b>Modification</b>	Unmodified
<b>Isotype</b>	IgG
<b>Clonality</b>	Polyclonal
<b>Form</b>	Liquid
<b>Concentration</b>	1mg/ml
<b>Storage</b>	Aliquot and store at -20°C (valid for 12 months). Avoid freeze/thaw cycles.
<b>Shipping</b>	Ice bags
<b>Buffer</b>	Rabbit IgG in phosphate buffered saline , pH 7.4, 150mM NaCl, 0.02% sodium azide and 50% glycerol.
<b>Purification</b>	Affinity Chromatography

**Application**

<b>Dilution Ratio</b>	WB 1:500-1:1000,IP 1:20-1:50
<b>Molecular Weight</b>	Calculated MW: 69 kDa; Observed MW: 69 kDa

**Antigen Information**

<b>Gene Name</b>	REL
<b>Alternative Names</b>	REL
<b>Gene ID</b>	5966
<b>SwissProt ID</b>	Q04864
<b>Immunogen</b>	A synthetic peptide of human c-Rel

**Background**

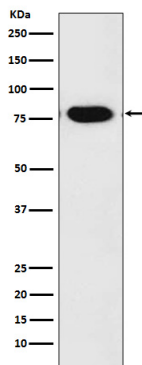
c-Rel contains an amino-terminal DNA-binding domain referred to as the REL homology domain (REH) and carboxy-terminal transactivation domains. The c-Rel protein is typically inhibited in unstimulated cells by I $\kappa$ B $\alpha$  and I $\kappa$ B $\beta$ . c-Rel expression is

highest in hematopoietic cells with extensive research studies demonstrating its role in immune cell function and pathogenesis of disease.

## Research Area

Signal Transduction

## Image Data



Western blot analysis of c-Rel in Daudi lysates using c-Rel antibody.