

Product Name: Fascin Rabbit Polyclonal Antibody**Catalog #: APRab00242**

For research use only.

Summary

Description	Rabbit polyclonal Antibody
Host	Rabbit
Application	WB,IHC,ICC/IF,FC,IP
Reactivity	Human,Mouse,Rat
Conjugation	Unconjugated
Modification	Unmodified
Isotype	IgG
Clonality	Polyclonal
Form	Liquid
Concentration	1mg/ml
Storage	Aliquot and store at -20°C (valid for 12 months). Avoid freeze/thaw cycles.
Shipping	Ice bags
Buffer	Rabbit IgG in phosphate buffered saline , pH 7.4, 150mM NaCl, 0.02% sodium azide and 50% glycerol.
Purification	Affinity Chromatography

Application

Dilution Ratio	WB 1:500-1:1000,IHC 1:50-1:100,ICC/IF 1:50-1:200,FC 1:50-1:100,IP 1:20-1:50
Molecular Weight	Calculated MW: 55 kDa; Observed MW: 55 kDa

Antigen Information

Gene Name	FSCN1
Alternative Names	55 kDa actin bundling protein; Actin bundling protein; FAN1; Fascin 1; Fascin; Singed (Drosophila) like (sea urchin fascin homolog like); Fascin homolog 1; Fascin
Gene ID	6624
SwissProt ID	Q16658
Immunogen	Recombinant protein of human Fascin

Background

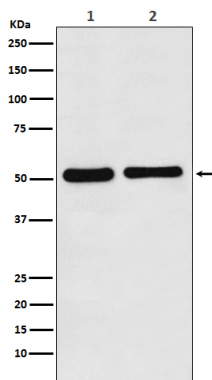
Promotes cross-linkage of parallel actin filaments during the formation of cell protrusions (lamellipodia and filopodia), and

therefore plays an important role in regulating cell migration. It has been reported that fascin may also regulate filopodia formation by a mechanism independent of its actin-bundling functions, though less is known about this mechanism of action.

Research Area

Cell Biology

Image Data



Western blot analysis of Fascin in (1) K562 lysates; (2) mouse kidney lysates using Fascin antibody.