
Product Name: Human IgG3 Rabbit Polyclonal Antibody**Catalog #: APRab00239**

For research use only.

Summary

Description	Rabbit polyclonal Antibody
Host	Rabbit
Application	WB,IP
Reactivity	Human
Conjugation	Unconjugated
Modification	Unmodified
Isotype	IgG
Clonality	Polyclonal
Form	Liquid
Concentration	1mg/ml
Storage	Aliquot and store at -20°C (valid for 12 months). Avoid freeze/thaw cycles.
Shipping	Ice bags
Buffer	Rabbit IgG in phosphate buffered saline , pH 7.4, 150mM NaCl, 0.02% sodium azide and 50% glycerol.
Purification	Affinity Chromatography

Application

Dilution Ratio	WB 1:500-1:1000,IP 1:20-1:50
Molecular Weight	Calculated MW: 41 kDa; Observed MW: 41 kDa

Antigen Information

Gene Name	IGHG3
Alternative Names	IgG3; G3m marker; HDC; Heavy chain disease protein; Ig gamma 3 chain C region; IGHG3 protein
Gene ID	3502.0
SwissProt ID	P01860
Immunogen	

Background

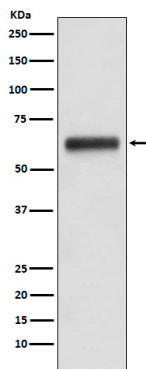
IgG is a monomeric immunoglobulin, built of two heavy chains gamma and two light chains. Each molecule has two antigen

binding sites. This is the most abundant immunoglobulin and is approximately equally distributed in blood and in tissue liquids, constituting 75% of serum immunoglobulins in humans.

Research Area

Immunology

Image Data



Western blot analysis of Human IgG3 in Human plasma lysates using Human IgG3 antibody.