
Product Name: GABARAPL2 Rabbit Polyclonal Antibody**Catalog #: APRab00238**

For research use only.

Summary

Description	Rabbit polyclonal Antibody
Host	Rabbit
Application	WB
Reactivity	Human, Mouse, Rat
Conjugation	Unconjugated
Modification	Unmodified
Isotype	IgG
Clonality	Polyclonal
Form	Liquid
Concentration	1mg/ml
Storage	Aliquot and store at -20°C (valid for 12 months). Avoid freeze/thaw cycles.
Shipping	Ice bags
Buffer	Rabbit IgG in phosphate buffered saline , pH 7.4, 150mM NaCl, 0.02% sodium azide and 50% glycerol.
Purification	Affinity Chromatography

Application

Dilution Ratio	WB 1:500-1:1000
Molecular Weight	Calculated MW: 14 kDa; Observed MW: 14 kDa

Antigen Information

Gene Name	GABARAPL2
Alternative Names	ATG8; GEF2; ATG8C; GEF-2; GATE16; GATE-16
Gene ID	11345
SwissProt ID	P60520
Immunogen	A synthetic peptide of human GABARAPL2

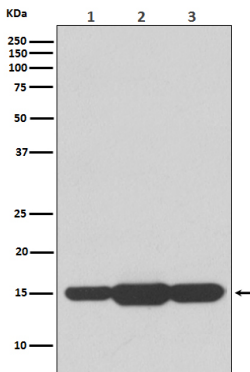
Background

Involved in intra-Golgi traffic. Modulates intra-Golgi transport through coupling between NSF activity and SNAREs activation. It first stimulates the ATPase activity of NSF which in turn stimulates the association with GOSR1.

Research Area

Signal Transduction

Image Data



Western blot analysis of GABARAPL2 in (1) HeLa lysates; (2) mouse spleen lysates; (3) rat brain lysates using GABARAPL2 antibody.