

Product Name: HP1 gamma Rabbit Polyclonal Antibody**Catalog #: APRab00234**

For research use only.

Summary

Description	Rabbit polyclonal Antibody
Host	Rabbit
Application	WB,IHC,FC,IP
Reactivity	Human,Mouse,Rat
Conjugation	Unconjugated
Modification	Unmodified
Isotype	IgG
Clonality	Polyclonal
Form	Liquid
Concentration	1mg/ml
Storage	Aliquot and store at -20°C (valid for 12 months). Avoid freeze/thaw cycles.
Shipping	Ice bags
Buffer	Rabbit IgG in phosphate buffered saline , pH 7.4, 150mM NaCl, 0.02% sodium azide and 50% glycerol.
Purification	Affinity Chromatography

Application

Dilution Ratio	WB 1:500-1:1000,IHC 1:50-1:100,FC 1:50-1:100,IP 1:20-1:50
Molecular Weight	Calculated MW: 21 kDa; Observed MW: 24 kDa

Antigen Information

Gene Name	CBX3
Alternative Names	CBX3; Chromobox protein homolog 3; HECH; Heterochromatin protein 1 homolog gamma; HP1 gamma; Modifier 2 protein
Gene ID	11335
SwissProt ID	Q13185
Immunogen	A synthetic peptide of human HP1 gamma

Background

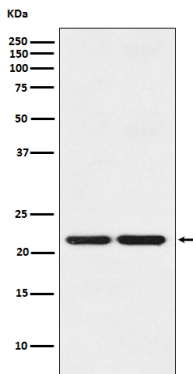
Recognizes and binds histone H3 tails methylated at 'Lys-9', leading to epigenetic repression. May contribute to the association

of the heterochromatin with the inner nuclear membrane through its interaction with lamin B receptor (LBR). Involved in the formation of functional kinetochore through interaction with MIS12 complex proteins.

Research Area

Epigenetics and Nuclear Signaling

Image Data



Western blot analysis of HP1 gamma in (1) HeLa lysates; (2) NIH/3T3 lysates using HP1 gamma antibody.