
Product Name: Emerin Rabbit Polyclonal Antibody**Catalog #: APRab00233**

For research use only.

Summary

Description	Rabbit polyclonal Antibody
Host	Rabbit
Application	WB,IHC,ICC/IF
Reactivity	Human,Mouse,Rat
Conjugation	Unconjugated
Modification	Unmodified
Isotype	IgG
Clonality	Polyclonal
Form	Liquid
Concentration	1mg/ml
Storage	Aliquot and store at -20°C (valid for 12 months). Avoid freeze/thaw cycles.
Shipping	Ice bags
Buffer	Rabbit IgG in phosphate buffered saline , pH 7.4, 150mM NaCl, 0.02% sodium azide and 50% glycerol.
Purification	Affinity Chromatography

Application

Dilution Ratio	WB 1:500-1:1000,IHC 1:50-1:100,ICC/IF 1:50-1:200
Molecular Weight	Calculated MW: 29 kDa; Observed MW: 29 kDa

Antigen Information

Gene Name	EMD
Alternative Names	STA; EDMD; LEMD5
Gene ID	2010
SwissProt ID	P50402
Immunogen	A synthetic peptide of human Emerin

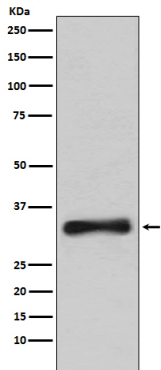
Background

Emerin may regulate gene expression through binding to other transcriptional regulators. Emerin binds to β -catenin and inhibits its nuclear accumulation. Recent studies demonstrate that Emerin is required for HIV-1 infectivity.

Research Area

Signal Transduction

Image Data



Western blot analysis of Emerin in 293T lysates using Emerin antibody.