
Product Name: Ran Rabbit Polyclonal Antibody**Catalog #: APRab00230**

For research use only.

Summary

Description	Rabbit polyclonal Antibody
Host	Rabbit
Application	WB,ICC/IF,FC,IP
Reactivity	Human,Mouse,Rat
Conjugation	Unconjugated
Modification	Unmodified
Isotype	IgG
Clonality	Polyclonal
Form	Liquid
Concentration	1mg/ml
Storage	Aliquot and store at -20°C (valid for 12 months). Avoid freeze/thaw cycles.
Shipping	Ice bags
Buffer	Rabbit IgG in phosphate buffered saline , pH 7.4, 150mM NaCl, 0.02% sodium azide and 50% glycerol.
Purification	Affinity Chromatography

Application

Dilution Ratio	WB 1:500-1:1000,ICC/IF 1:50-1:200,FC 1:50-1:100,IP 1:20-1:50
Molecular Weight	Calculated MW: 24 kDa; Observed MW: 24 kDa

Antigen Information

Gene Name	RAN
Alternative Names	RAN; ARA24; OK/SW-cl.81; GTP-binding nuclear protein Ran; Androgen receptor-associated protein 24; GTPase Ran; Ras-like protein TC4; Ras-related nuclear protein
Gene ID	5901
SwissProt ID	P62826
Immunogen	A synthetic peptide of human Ran

Background

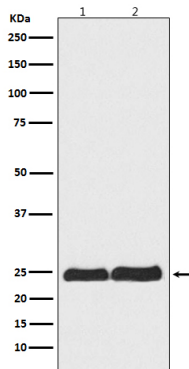
GTP-binding protein involved in nucleocytoplasmic transport. Required for the import of protein into the nucleus and also for

RNA export. Involved in chromatin condensation and control of cell cycle (By similarity).

Research Area

Cell Biology

Image Data



Western blot analysis of Ran in (1)HeLa lysates; (2)RAW264.7 lysates using Ran antibody.