
Product Name: ApoER2 Rabbit Polyclonal Antibody**Catalog #: APRab00229**

For research use only.

Summary

Description	Rabbit polyclonal Antibody
Host	Rabbit
Application	WB,IP
Reactivity	Human,Mouse,Rat
Conjugation	Unconjugated
Modification	Unmodified
Isotype	IgG
Clonality	Polyclonal
Form	Liquid
Concentration	1mg/ml
Storage	Aliquot and store at -20°C (valid for 12 months). Avoid freeze/thaw cycles.
Shipping	Ice bags
Buffer	Rabbit IgG in phosphate buffered saline , pH 7.4, 150mM NaCl, 0.02% sodium azide and 50% glycerol.
Purification	Affinity Chromatography

Application

Dilution Ratio	WB 1:500-1:1000,IP 1:20-1:50
Molecular Weight	Calculated MW: 106 kDa; Observed MW: 106 kDa

Antigen Information

Gene Name	LRP8
Alternative Names	LRP8; APOER2; Low-density lipoprotein receptor-related protein 8; LRP-8; Apolipoprotein E receptor 2
Gene ID	7804
SwissProt ID	Q14114
Immunogen	A synthetic peptide of human ApoER2

Background

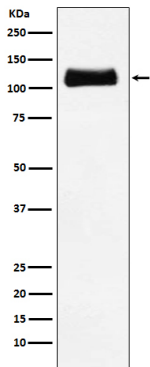
Cell surface receptor for Reelin (RELN) and apolipoprotein E (apoE)-containing ligands. LRP8 participates in transmitting the

extracellular Reelin signal to intracellular signaling processes, by binding to DAB1 on its cytoplasmic tail.

Research Area

Neuroscience

Image Data



Western blot analysis of ApoER2 in C6 lysates using ApoER2 antibody.