

---

**Product Name: ROCK2 Rabbit Polyclonal Antibody****Catalog #: APRab00225**

For research use only.

**Summary**

<b>Description</b>	Rabbit polyclonal Antibody
<b>Host</b>	Rabbit
<b>Application</b>	WB,ICC/IF
<b>Reactivity</b>	Human,Mouse,Rat
<b>Conjugation</b>	Unconjugated
<b>Modification</b>	Unmodified
<b>Isotype</b>	IgG
<b>Clonality</b>	Polyclonal
<b>Form</b>	Liquid
<b>Concentration</b>	1mg/ml
<b>Storage</b>	Aliquot and store at -20°C (valid for 12 months). Avoid freeze/thaw cycles.
<b>Shipping</b>	Ice bags
<b>Buffer</b>	Rabbit IgG in phosphate buffered saline , pH 7.4, 150mM NaCl, 0.02% sodium azide and 50% glycerol.
<b>Purification</b>	Affinity Chromatography

**Application**

<b>Dilution Ratio</b>	WB 1:500-1:1000,ICC/IF 1:50-1:200
<b>Molecular Weight</b>	Calculated MW: 161 kDa; Observed MW: 161 kDa

**Antigen Information**

<b>Gene Name</b>	ROCK2
<b>Alternative Names</b>	p164 ROCK 2; Rho kinase 2; ROCK 2; Rock II; Rock2m; ROK alpha; ROKalpha
<b>Gene ID</b>	9475
<b>SwissProt ID</b>	O75116
<b>Immunogen</b>	A synthetic peptide of human ROCK2

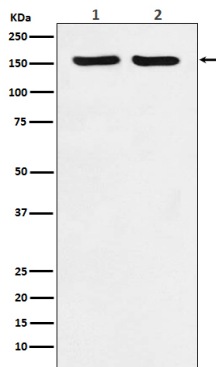
**Background**

Regulates the assembly of the actin cytoskeleton. Promotes formation of stress fibers and of focal adhesion complexes. Plays a role in smooth muscle contraction.

## Research Area

Cell Biology

## Image Data



Western blot analysis of ROCK2 in (1) HeLa lysates; (2) RAW264.7 lysates using ROCK2 antibody.