

Product Name: Growth Hormone Receptor Rabbit Polyclonal Antibody**Catalog #: APRab00223**

For research use only.

Summary

Description	Rabbit polyclonal Antibody
Host	Rabbit
Application	WB,ICC/IF,FC
Reactivity	Human,Mouse,Rat
Conjugation	Unconjugated
Modification	Unmodified
Isotype	IgG
Clonality	Polyclonal
Form	Liquid
Concentration	1mg/ml
Storage	Aliquot and store at -20°C (valid for 12 months). Avoid freeze/thaw cycles.
Shipping	Ice bags
Buffer	Rabbit IgG in phosphate buffered saline , pH 7.4, 150mM NaCl, 0.02% sodium azide and 50% glycerol.
Purification	Affinity Chromatography

Application

Dilution Ratio	WB 1:500-1:1000,ICC/IF 1:50-1:200,FC 1:50-1:100
Molecular Weight	Calculated MW: 72 kDa; Observed MW: 140 kDa

Antigen Information

Gene Name	GHR
Alternative Names	GHR; Growth hormone receptor; GH receptor; Somatotropin receptor
Gene ID	2690
SwissProt ID	P10912
Immunogen	A synthetic peptide of human Growth hormone receptor

Background

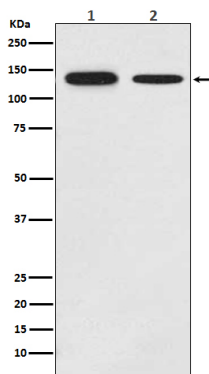
Receptor for pituitary gland growth hormone involved in regulating postnatal body growth. On ligand binding, couples to the JAK2/STAT5 pathway. The soluble form (GHBP) acts as a reservoir of growth hormone in plasma and may be a

modulator/inhibitor of GH signaling. Isoform 2 up-regulates the production of GHBP and acts as a negative inhibitor of GH signaling.

Research Area

Signal Transduction

Image Data



Western blot analysis of Growth hormone receptor in (1) MCF-7 lysates; (2) mouse brain lysates using Growth Hormone Receptor antibody.