
Product Name: Menin Rabbit Polyclonal Antibody**Catalog #: APRab00217**

For research use only.

Summary

Description	Rabbit polyclonal Antibody
Host	Rabbit
Application	WB,IHC,ICC/IF,IP
Reactivity	Human
Conjugation	Unconjugated
Modification	Unmodified
Isotype	IgG
Clonality	Polyclonal
Form	Liquid
Concentration	1mg/ml
Storage	Aliquot and store at -20°C (valid for 12 months). Avoid freeze/thaw cycles.
Shipping	Ice bags
Buffer	Rabbit IgG in phosphate buffered saline , pH 7.4, 150mM NaCl, 0.02% sodium azide and 50% glycerol.
Purification	Affinity Chromatography

Application

Dilution Ratio	WB 1:500-1:1000,IHC 1:50-1:100,ICC/IF 1:50-1:200,IP 1:20-1:50
Molecular Weight	Calculated MW: 68 kDa; Observed MW: 68 kDa

Antigen Information

Gene Name	MEN1
Alternative Names	MEN1; SCG2; Menin
Gene ID	4221
SwissProt ID	O00255
Immunogen	A synthetic peptide of human Menin

Background

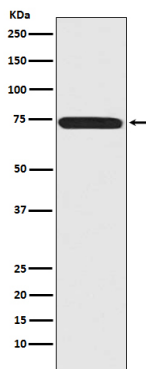
Menin, the protein product of the MEN1 gene, is a component of the mixed-lineage leukemia protein (MLL)-containing histone methyltransferase complex that facilitates methylation of histone H3 Lys4 to promote transcriptional activation. Menin

functions to suppress proliferation of pancreatic islet cells, at least in part through MLL-mediated activation of the p18INK4c (p18) and p27CIP/KIP (p27) cyclin-dependent kinase inhibitor genes.

Research Area

Epigenetics and Nuclear Signaling

Image Data



Western blot analysis of Menin in 293T lysates using Menin antibody.