
Product Name: Staufen Rabbit Polyclonal Antibody**Catalog #: APRab00213**

For research use only.

Summary

Description	Rabbit polyclonal Antibody
Host	Rabbit
Application	WB,ICC/IF,FC
Reactivity	Human,Mouse,Rat
Conjugation	Unconjugated
Modification	Unmodified
Isotype	IgG
Clonality	Polyclonal
Form	Liquid
Concentration	1mg/ml
Storage	Aliquot and store at -20°C (valid for 12 months). Avoid freeze/thaw cycles.
Shipping	Ice bags
Buffer	Rabbit IgG in phosphate buffered saline , pH 7.4, 150mM NaCl, 0.02% sodium azide and 50% glycerol.
Purification	Affinity Chromatography

Application

Dilution Ratio	WB 1:500-1:1000,ICC/IF 1:50-1:200,FC 1:50-1:100
Molecular Weight	Calculated MW: 63 kDa; Observed MW: 55 kDa

Antigen Information

Gene Name	STAU1
Alternative Names	STAU; PPP1R150
Gene ID	6780
SwissProt ID	O95793
Immunogen	A synthetic peptide of human Staufen

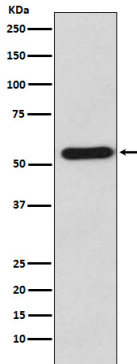
Background

Binds double-stranded RNA (regardless of the sequence) and tubulin. May play a role in specific positioning of mRNAs at given sites in the cell by cross-linking cytoskeletal and RNA components, and in stimulating their translation at the site.

Research Area

Signal Transduction

Image Data



Western blot analysis of Staufen in K562 lysates using Staufen antibody.