
Product Name: SNAP25 Rabbit Polyclonal Antibody**Catalog #: APRab00198**

For research use only.

Summary

Description	Rabbit polyclonal Antibody
Host	Rabbit
Application	WB,ICC/IF,IP
Reactivity	Human,Mouse,Rat
Conjugation	Unconjugated
Modification	Unmodified
Isotype	IgG
Clonality	Polyclonal
Form	Liquid
Concentration	1mg/ml
Storage	Aliquot and store at -20°C (valid for 12 months). Avoid freeze/thaw cycles.
Shipping	Ice bags
Buffer	Rabbit IgG in phosphate buffered saline , pH 7.4, 150mM NaCl, 0.02% sodium azide and 50% glycerol.
Purification	Affinity Chromatography

Application

Dilution Ratio	WB 1:500-1:1000,ICC/IF 1:50-1:200,IP 1:20-1:50
Molecular Weight	Calculated MW: 23 kDa; Observed MW: 23 kDa

Antigen Information

Gene Name	SNAP25
Alternative Names	Synaptosomal-associated protein 25; SNAP-25; Super protein; SUP; Synaptosomal-associated 25 kDa protein; SNAP25; SNAP
Gene ID	6616
SwissProt ID	P60880
Immunogen	A synthetic peptide of human SNAP25

Background

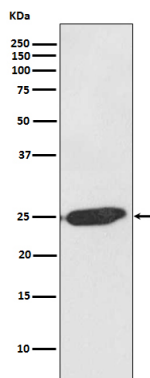
SNAP25 forms a core complex with the SNARE proteins syntaxin and synaptobrevin to mediate synaptic vesicle fusion with the

plasma membrane during Ca²⁺-dependent exocytosis. This complex is responsible for exocytosis of the neurotransmitter γ -aminobutyric acid (GABA). Neurotransmitter release is inhibited by proteolysis of SNAP25 by botulinum toxins A and E. SNAP25 plays a secondary role as a Q-SNARE involved in endosome fusion; the protein is associated with genetic susceptibility to attention-deficit hyperactivity disorder (ADHD).

Research Area

Neuroscience

Image Data



Western blot analysis of SNAP25 in SH-SY5Y lysates using SNAP25 antibody.