

---

**Product Name: Glucose Transporter GLUT3 Rabbit Polyclonal Antibody****Catalog #: APRab00196**

For research use only.

**Summary**

<b>Description</b>	Rabbit polyclonal Antibody
<b>Host</b>	Rabbit
<b>Application</b>	WB
<b>Reactivity</b>	Human, Mouse, Rat
<b>Conjugation</b>	Unconjugated
<b>Modification</b>	Unmodified
<b>Isotype</b>	IgG
<b>Clonality</b>	Polyclonal
<b>Form</b>	Liquid
<b>Concentration</b>	1mg/ml
<b>Storage</b>	Aliquot and store at -20°C (valid for 12 months). Avoid freeze/thaw cycles.
<b>Shipping</b>	Ice bags
<b>Buffer</b>	Rabbit IgG in phosphate buffered saline , pH 7.4, 150mM NaCl, 0.02% sodium azide and 50% glycerol.
<b>Purification</b>	Affinity Chromatography

**Application**

<b>Dilution Ratio</b>	WB 1:500-1:1000
<b>Molecular Weight</b>	Calculated MW: 54 kDa; Observed MW: 54 kDa

**Antigen Information**

<b>Gene Name</b>	SLC2A3
<b>Alternative Names</b>	SLC2A3; GLUT3; Solute carrier family 2; facilitated glucose transporter member 3; Glucose transporter type 3; brain; GLUT-3
<b>Gene ID</b>	6515
<b>SwissProt ID</b>	P11169
<b>Immunogen</b>	A synthetic peptide of human Glucose Transporter GLUT3

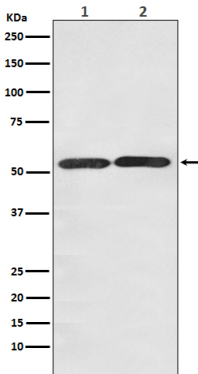
**Background**

Facilitative glucose transporter. Probably a neuronal glucose transporter.

## Research Area

Signal Transduction

## Image Data



Western blot analysis of GLUT3 in (1) HepG2 lysates; (2) NIH/3T3 lysates using Glucose Transporter GLUT3 antibody.