

---

**Product Name: Profilin 1 Rabbit Polyclonal Antibody****Catalog #: APRab00190**

For research use only.

**Summary**

<b>Description</b>	Rabbit polyclonal Antibody
<b>Host</b>	Rabbit
<b>Application</b>	WB,IHC,ICC/IF,FC,IP
<b>Reactivity</b>	Human,Mouse,Rat
<b>Conjugation</b>	Unconjugated
<b>Modification</b>	Unmodified
<b>Isotype</b>	IgG
<b>Clonality</b>	Polyclonal
<b>Form</b>	Liquid
<b>Concentration</b>	1mg/ml
<b>Storage</b>	Aliquot and store at -20°C (valid for 12 months). Avoid freeze/thaw cycles.
<b>Shipping</b>	Ice bags
<b>Buffer</b>	Rabbit IgG in phosphate buffered saline , pH 7.4, 150mM NaCl, 0.02% sodium azide and 50% glycerol.
<b>Purification</b>	Affinity Chromatography

**Application**

<b>Dilution Ratio</b>	WB 1:500-1:1000,IHC 1:50-1:100,ICC/IF 1:50-1:200,FC 1:50-1:100,IP 1:20-1:50
<b>Molecular Weight</b>	Calculated MW: 15 kDa; Observed MW: 15 kDa

**Antigen Information**

<b>Gene Name</b>	PFN1
<b>Alternative Names</b>	Epididymis tissue protein Li 184a; Profilin I
<b>Gene ID</b>	5216
<b>SwissProt ID</b>	P07737
<b>Immunogen</b>	A synthetic peptide of human Profilin 1

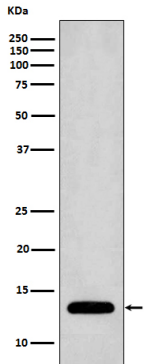
**Background**

Binds to actin and affects the structure of the cytoskeleton. At high concentrations, profilin prevents the polymerization of actin, whereas it enhances it at low concentrations. By binding to PIP2, it inhibits the formation of IP3 and DG.

## Research Area

Tags & Cell Markers

## Image Data



Western blot analysis of Profilin1 in Jurkat lysates using Profilin 1 antibody.