

Product Name: Glucose 6 Phosphate Dehydrogenase Rabbit Polyclonal Antibody
Catalog #: APRab00187

For research use only.

Summary

Description	Rabbit polyclonal Antibody
Host	Rabbit
Application	WB,IHC,ICC/IF,FC
Reactivity	Human
Conjugation	Unconjugated
Modification	Unmodified
Isotype	IgG
Clonality	Polyclonal
Form	Liquid
Concentration	1mg/ml
Storage	Aliquot and store at -20°C (valid for 12 months). Avoid freeze/thaw cycles.
Shipping	Ice bags
Buffer	Rabbit IgG in phosphate buffered saline , pH 7.4, 150mM NaCl, 0.02% sodium azide and 50% glycerol.
Purification	Affinity Chromatography

Application

Dilution Ratio	WB 1:500-1:1000,IHC 1:50-1:100,ICC/IF 1:50-1:200,FC 1:50-1:100
Molecular Weight	Calculated MW: 59 kDa; Observed MW: 59 kDa

Antigen Information

Gene Name	G6PD
Alternative Names	G6PD; Glucose-6-phosphate 1-dehydrogenase; G6PD
Gene ID	2539
SwissProt ID	P11413
Immunogen	A synthetic peptide of human Glucose 6 Phosphate Dehydrogenase

Background

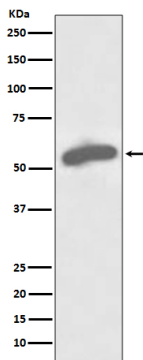
Catalyzes the rate-limiting step of the oxidative pentose-phosphate pathway, which represents a route for the dissimilation of carbohydrates besides glycolysis. The main function of this enzyme is to provide reducing power (NADPH) and pentose

phosphates for fatty acid and nucleic acid synthesis.

Research Area

Signal Transduction

Image Data



Western blot analysis of G6PD in MCF-7 lysates using Glucose 6 Phosphate Dehydrogenase antibody.