
Product Name: CaMKII delta Rabbit Polyclonal Antibody**Catalog #: APRab00186**

For research use only.

Summary

Description	Rabbit polyclonal Antibody
Host	Rabbit
Application	WB,IHC
Reactivity	Human,Mouse,Rat
Conjugation	Unconjugated
Modification	Unmodified
Isotype	IgG
Clonality	Polyclonal
Form	Liquid
Concentration	1mg/ml
Storage	Aliquot and store at -20°C (valid for 12 months). Avoid freeze/thaw cycles.
Shipping	Ice bags
Buffer	Rabbit IgG in phosphate buffered saline , pH 7.4, 150mM NaCl, 0.02% sodium azide and 50% glycerol.
Purification	Affinity Chromatography

Application

Dilution Ratio	WB 1:500-1:1000,IHC 1:50-1:100
Molecular Weight	Calculated MW: 56 kDa; Observed MW: 50 kDa

Antigen Information

Gene Name	CAMK2D
Alternative Names	CAM kinase 2 delta; CAM kinase II delta; CaM kinase II delta subunit; CaM kinase II subunit delta; CAMK 2d; CaMK-II delta subunit; CAMK2D; CAMKI
Gene ID	817
SwissProt ID	Q13557
Immunogen	A synthetic peptide of human CaMKII delta

Background

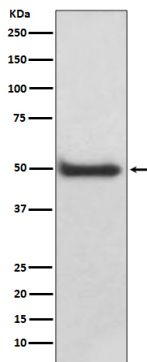
CaM-kinase II (CAMK2) is a prominent kinase in the central nervous system that may function in long-term potentiation and

neurotransmitter release.

Research Area

Neuroscience

Image Data



Western blot analysis of CaMKII delta in A431 lysates using CaMKII delta antibody.