

Product Name: PKA RII beta Rabbit Polyclonal Antibody
Catalog #: APRab00184



Summary

Production Name	PKA RII beta Rabbit Polyclonal Antibody
Description	Rabbit Polyclonal Antibody
Host	Rabbit
Application	WB,IHC-P,ICC/IF,FC,IP
Reactivity	Human,Mouse,Rat

Performance

Conjugation	Unconjugated
Modification	Unmodified
Isotype	IgG
Clonality	Polyclonal
Form	Liquid
Storage	Store at 4°C short term. Aliquot and store at -20°C long term. Avoid freeze/thaw cycles.
Buffer	Rabbit IgG in phosphate buffered saline , pH 7.4, 150mM NaCl, 0.02% sodium azide and 50% glycerol.
Purification	Affinity Chromatography

Immunogen

Gene Name	PRKAR2B
Alternative Names	AI451071; cAMP dependent protein kinase type II beta regulatory chain; Pkarb2; PRKAR2B; Protein kinase cAMP dependent regulatory type II beta; RATDNA; RII beta
Gene ID	5577
SwissProt ID	P31323.

Application

Dilution Ratio	WB: 1:500-1:1000 IHC: 1:50-1:100 IF: 1:50-1:200 IP: 1:20 FC: 1:50-1:100
Molecular Weight	Calculated MW: 46 kDa; Observed MW: 46 kDa

Background

Product Name: PKA RII beta Rabbit Polyclonal Antibody
Catalog #: APRab00184

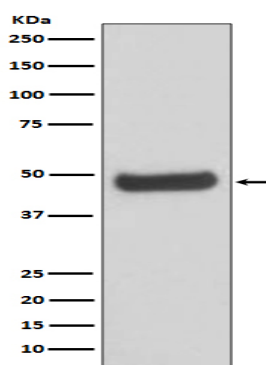


Regulatory subunit of the cAMP-dependent protein kinases involved in cAMP signaling in cells. Type II regulatory chains mediate membrane association by binding to anchoring proteins, including the MAP2 kinase.

Research Area

Signal Transduction

Image Data



Western blot analysis of PKA 2 beta in Human fetal brain lysates using PKA RII beta antibody.

Note

For research use only.