

Product Name: PABPN1 Rabbit Polyclonal Antibody**Catalog #: APRab00180**

For research use only.

Summary

| | |
|----------------------|--|
| Description | Rabbit polyclonal Antibody |
| Host | Rabbit |
| Application | WB,IHC,ICC/IF,FC,IP |
| Reactivity | Human,Mouse |
| Conjugation | Unconjugated |
| Modification | Unmodified |
| Isotype | IgG |
| Clonality | Polyclonal |
| Form | Liquid |
| Concentration | 1mg/ml |
| Storage | Aliquot and store at -20°C (valid for 12 months). Avoid freeze/thaw cycles. |
| Shipping | Ice bags |
| Buffer | Rabbit IgG in phosphate buffered saline , pH 7.4, 150mM NaCl, 0.02% sodium azide and 50% glycerol. |
| Purification | Affinity Chromatography |

Application

| | |
|-------------------------|---|
| Dilution Ratio | WB 1:500-1:1000,IHC 1:50-1:100,ICC/IF 1:50-1:200,FC 1:50-1:100,IP 1:20-1:50 |
| Molecular Weight | Calculated MW: 33 kDa; Observed MW: 49 kDa |

Antigen Information

| | |
|--------------------------|-------------------------------------|
| Gene Name | PABPN1 |
| Alternative Names | OPMD; PAB2; PABII; PABP2; PABP-2 |
| Gene ID | 8106 |
| SwissProt ID | Q86U42 |
| Immunogen | A synthetic peptide of human PABPN1 |

Background

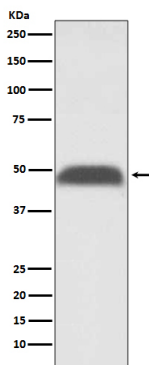
Involved in the 3'-end formation of mRNA precursors (pre-mRNA) by the addition of a poly(A) tail of 200-250 nt to the upstream cleavage product. Stimulates poly(A) polymerase (PAPOLA) conferring processivity on the poly(A) tail elongation

reaction and controls also the poly(A) tail length. Increases the affinity of poly(A) polymerase for RNA.

Research Area

Epigenetics and Nuclear Signaling

Image Data



Western blot analysis of PABPN1 in HeLa lysates using PABPN1 antibody.