
Product Name: Aquaporin 1 Rabbit Polyclonal Antibody**Catalog #: APRab00171**

For research use only.

Summary

Description	Rabbit polyclonal Antibody
Host	Rabbit
Application	WB,IHC,ICC/IF
Reactivity	Human,Mouse,Rat
Conjugation	Unconjugated
Modification	Unmodified
Isotype	IgG
Clonality	Polyclonal
Form	Liquid
Concentration	1mg/ml
Storage	Aliquot and store at -20°C (valid for 12 months). Avoid freeze/thaw cycles.
Shipping	Ice bags
Buffer	Rabbit IgG in phosphate buffered saline , pH 7.4, 150mM NaCl, 0.02% sodium azide and 50% glycerol.
Purification	Affinity Chromatography

Application

Dilution Ratio	WB 1:500-1:1000,IHC 1:50-1:100,ICC/IF 1:50-1:200
Molecular Weight	Calculated MW: 29 kDa; Observed MW: 29 kDa

Antigen Information

Gene Name	AQP1
Alternative Names	AQP1; CHIP28; Aquaporin-1; AQP-1; Aquaporin-CHIP; Urine water channel; Water channel protein for red blood cells and kidney proximal tubule
Gene ID	358
SwissProt ID	P29972
Immunogen	A synthetic peptide of human Aquaporin 1

Background

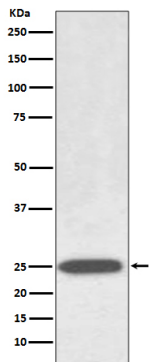
Forms a water-specific channel that provides the plasma membranes of red cells and kidney proximal tubules with high

permeability to water, thereby permitting water to move in the direction of an osmotic gradient.

Research Area

Cell Biology

Image Data



Western blot analysis of AQP1 in Human fetal kidney lysates using Aquaporin 1 antibody.