

---

**Product Name: ATPB Rabbit Polyclonal Antibody****Catalog #: APRab00170**

For research use only.

**Summary**

<b>Description</b>	Rabbit polyclonal Antibody
<b>Host</b>	Rabbit
<b>Application</b>	WB,IHC,ICC/IF,IP
<b>Reactivity</b>	Human,Mouse,Rat
<b>Conjugation</b>	Unconjugated
<b>Modification</b>	Unmodified
<b>Isotype</b>	IgG
<b>Clonality</b>	Polyclonal
<b>Form</b>	Liquid
<b>Concentration</b>	1mg/ml
<b>Storage</b>	Aliquot and store at -20°C (valid for 12 months). Avoid freeze/thaw cycles.
<b>Shipping</b>	Ice bags
<b>Buffer</b>	Rabbit IgG in phosphate buffered saline , pH 7.4, 150mM NaCl, 0.02% sodium azide and 50% glycerol.
<b>Purification</b>	Affinity Chromatography

**Application**

<b>Dilution Ratio</b>	WB 1:500-1:1000,IHC 1:50-1:100,ICC/IF 1:50-1:200,IP 1:20-1:50
<b>Molecular Weight</b>	Calculated MW: 57 kDa; Observed MW: 50 kDa

**Antigen Information**

<b>Gene Name</b>	ATP5F1B
<b>Alternative Names</b>	ATP5B; ATPMB; ATPSB; HEL-S-271
<b>Gene ID</b>	506
<b>SwissProt ID</b>	P06576
<b>Immunogen</b>	A synthetic peptide of human ATPB

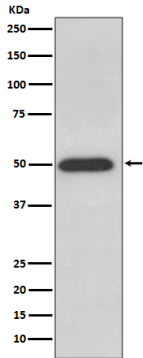
**Background**

Rotation of the central stalk against the surrounding alpha(3)beta(3) subunits leads to hydrolysis of ATP in three separate catalytic sites on the beta subunits.

## Research Area

Tags & Cell Markers

## Image Data



Western blot analysis of ATPB in HeLa lysates using ATPB antibody.