

---

**Product Name: SDHA Rabbit Polyclonal Antibody****Catalog #: APRab00168**

For research use only.

**Summary**

<b>Description</b>	Rabbit polyclonal Antibody
<b>Host</b>	Rabbit
<b>Application</b>	WB,IHC,ICC/IF,FC,IP
<b>Reactivity</b>	Human,Mouse,Rat
<b>Conjugation</b>	Unconjugated
<b>Modification</b>	Unmodified
<b>Isotype</b>	IgG
<b>Clonality</b>	Polyclonal
<b>Form</b>	Liquid
<b>Concentration</b>	1mg/ml
<b>Storage</b>	Aliquot and store at -20°C (valid for 12 months). Avoid freeze/thaw cycles.
<b>Shipping</b>	Ice bags
<b>Buffer</b>	Rabbit IgG in phosphate buffered saline , pH 7.4, 150mM NaCl, 0.02% sodium azide and 50% glycerol.
<b>Purification</b>	Affinity Chromatography

**Application**

<b>Dilution Ratio</b>	WB 1:500-1:1000,IHC 1:50-1:100,ICC/IF 1:50-1:200,FC 1:50-1:100,IP 1:20-1:50
<b>Molecular Weight</b>	Calculated MW: 73 kDa; Observed MW: 73 kDa

**Antigen Information**

<b>Gene Name</b>	SDHA
<b>Alternative Names</b>	SDHA; SDH2; SDHF; Succinate dehydrogenase [ubiquinone] flavoprotein subunit; mitochondrial; Flavoprotein subunit of complex II; Fp
<b>Gene ID</b>	6389
<b>SwissProt ID</b>	P31040
<b>Immunogen</b>	A synthetic peptide of human SDHA

**Background**

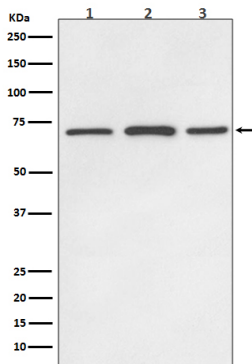
Flavoprotein (FP) subunit of succinate dehydrogenase (SDH) that is involved in complex II of the mitochondrial electron

transport chain and is responsible for transferring electrons from succinate to ubiquinone.

## Research Area

Tags & Cell Markers

## Image Data



Western blot analysis of SDHA in (1) HeLa lysates; (2) mouse brain lysates; (3) rat brain lysates; using SDHA antibody.