
Product Name: Calbindin Rabbit Polyclonal Antibody**Catalog #: APRab00164**

For research use only.

Summary

Description	Rabbit polyclonal Antibody
Host	Rabbit
Application	WB,IHC,ICC/IF
Reactivity	Human,Mouse,Rat
Conjugation	Unconjugated
Modification	Unmodified
Isotype	IgG
Clonality	Polyclonal
Form	Liquid
Concentration	1mg/ml
Storage	Aliquot and store at -20°C (valid for 12 months). Avoid freeze/thaw cycles.
Shipping	Ice bags
Buffer	Rabbit IgG in phosphate buffered saline , pH 7.4, 150mM NaCl, 0.02% sodium azide and 50% glycerol.
Purification	Affinity Chromatography

Application

Dilution Ratio	WB 1:500-1:1000,IHC 1:50-1:100,ICC/IF 1:50-1:200
Molecular Weight	Calculated MW: 30 kDa; Observed MW: 30 kDa

Antigen Information

Gene Name	CALB1
Alternative Names	avian-type; CAB27; CALB1; Calbindin 1 28kDa; Calbindin; D28K; RTVL H protein
Gene ID	793
SwissProt ID	P05937
Immunogen	A synthetic peptide of human Calbindin

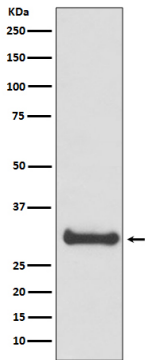
Background

Buffers cytosolic calcium. May stimulate a membrane Ca(2+)-ATPase and a 3',5'-cyclic nucleotide phosphodiesterase.

Research Area

Neuroscience

Image Data



Western blot analysis of Calbindin in Human fetal brain lysates using Calbindin antibody.