
Product Name: PROX1 Rabbit Polyclonal Antibody**Catalog #: APRab00158**

For research use only.

Summary

Description	Rabbit polyclonal Antibody
Host	Rabbit
Application	WB
Reactivity	Human
Conjugation	Unconjugated
Modification	Unmodified
Isotype	IgG
Clonality	Polyclonal
Form	Liquid
Concentration	1mg/ml
Storage	Aliquot and store at -20°C (valid for 12 months). Avoid freeze/thaw cycles.
Shipping	Ice bags
Buffer	Rabbit IgG in phosphate buffered saline , pH 7.4, 150mM NaCl, 0.02% sodium azide and 50% glycerol.
Purification	Affinity Chromatography

Application

Dilution Ratio	WB 1:500-1:1000
Molecular Weight	Calculated MW: 83 kDa; Observed MW: 95 kDa

Antigen Information

Gene Name	PROX1
Alternative Names	Homeobox prospero like protein; Prospero homeobox protein 1; prospero-related homeobox gene 1; PROX1
Gene ID	5629
SwissProt ID	Q92786
Immunogen	A synthetic peptide of human PROX1

Background

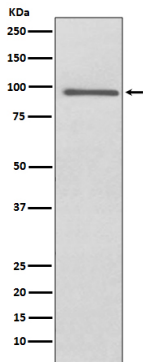
Plays a critical role in embryonic development and functions as a key regulatory protein in neurogenesis and the development

of the heart, eye lens, liver, pancreas and the lymphatic system. Involved in the regulation of the circadian rhythm.

Research Area

Neuroscience

Image Data



Western blot analysis of PROX1 in HepG2 lysates using PROX1 antibody.