

Product Name: MiTF Rabbit Polyclonal Antibody**Catalog #: APRab00155**

For research use only.

Summary

Description	Rabbit polyclonal Antibody
Host	Rabbit
Application	WB
Reactivity	Human, Mouse, Rat
Conjugation	Unconjugated
Modification	Unmodified
Isotype	IgG
Clonality	Polyclonal
Form	Liquid
Concentration	1mg/ml
Storage	Aliquot and store at -20°C (valid for 12 months). Avoid freeze/thaw cycles.
Shipping	Ice bags
Buffer	Rabbit IgG in phosphate buffered saline , pH 7.4, 150mM NaCl, 0.02% sodium azide and 50% glycerol.
Purification	Affinity Chromatography

Application

Dilution Ratio	WB 1:500-1:1000
Molecular Weight	Calculated MW: 59 kDa; Observed MW: 52 kDa

Antigen Information

Gene Name	MITF
Alternative Names	MITF; BHLHE32; Microphthalmia-associated transcription factor; Class E basic helix-loop-helix protein 32; bHLHe32
Gene ID	4286
SwissProt ID	O75030
Immunogen	

Background

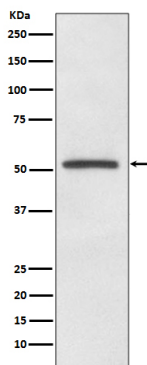
Microphthalmia-associated transcription factor (MITF) is a basic helix-loop-helix leucine zipper transcription factor that is most

widely known for its roles in melanocyte, ophthalmic, and osteoclast development. Plays a critical role in the differentiation of various cell types as neural crest-derived melanocytes, mast cells, osteoclasts and optic cup-derived retinal pigment epithelium.

Research Area

Epigenetics and Nuclear Signaling

Image Data



Western blot analysis of MITF in A375 lysates using MITF antibody.