
Product Name: Ctip2 Rabbit Polyclonal Antibody**Catalog #: APRab00153**

For research use only.

Summary

Description	Rabbit polyclonal Antibody
Host	Rabbit
Application	WB
Reactivity	Human
Conjugation	Unconjugated
Modification	Unmodified
Isotype	IgG
Clonality	Polyclonal
Form	Liquid
Concentration	1mg/ml
Storage	Aliquot and store at -20°C (valid for 12 months). Avoid freeze/thaw cycles.
Shipping	Ice bags
Buffer	Rabbit IgG in phosphate buffered saline , pH 7.4, 150mM NaCl, 0.02% sodium azide and 50% glycerol.
Purification	Affinity Chromatography

Application

Dilution Ratio	WB 1:500-1:1000
Molecular Weight	Calculated MW: 96 kDa; Observed MW: 140 kDa

Antigen Information

Gene Name	BCL11B
Alternative Names	ATL1 alpha; ATL1 beta; ATL1 gamma; ATL1 delta; Bcl11b; BCL11B/TRDC fusion; CTIP2; hRIT1 alpha; hRit1; Rit1
Gene ID	64919
SwissProt ID	Q9C0K0
Immunogen	A synthetic peptide of human Ctip2

Background

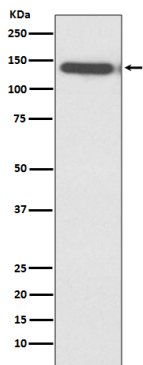
Tumor-suppressor protein involved in T-cell lymphomas. May function on the P53-signaling pathway. May be a key regulator

of both differentiation and survival during thymocyte development. Repress transcription through direct, TFCOUP2-independent binding to a GC-rich response element.

Research Area

Epigenetics and Nuclear Signaling

Image Data



Western blot analysis of Ctip2 in Jurkat lysates using Ctip2 antibody.