
Product Name: Mannose Receptor Rabbit Polyclonal Antibody**Catalog #: APRab00146**

For research use only.

Summary

Description	Rabbit polyclonal Antibody
Host	Rabbit
Application	WB,ICC/IF
Reactivity	Human
Conjugation	Unconjugated
Modification	Unmodified
Isotype	IgG
Clonality	Polyclonal
Form	Liquid
Concentration	1mg/ml
Storage	Aliquot and store at -20°C (valid for 12 months). Avoid freeze/thaw cycles.
Shipping	Ice bags
Buffer	Rabbit IgG in phosphate buffered saline , pH 7.4, 150mM NaCl, 0.02% sodium azide and 50% glycerol.
Purification	Affinity Chromatography

Application

Dilution Ratio	WB 1:500-1:1000,ICC/IF 1:50-1:200
Molecular Weight	Calculated MW: 166 kDa; Observed MW: 166 kDa

Antigen Information

Gene Name	MRC1 MRC1; CLEC13D; CLEC13DL; MRC1L1; Macrophage mannose receptor 1; MMR; C-type lectin
Alternative Names	domain family 13 member D; C-type lectin domain family 13 member D-like; Macrophage mannose receptor 1-like protein 1; CD antigen CD206
Gene ID	4360
SwissProt ID	P22897
Immunogen	A synthetic peptide of human Mannose Receptor

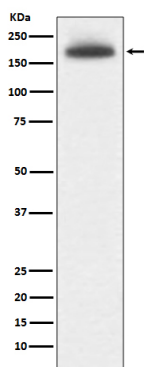
Background

Mediates the endocytosis of glycoproteins by macrophages. Binds both sulfated and non-sulfated polysaccharide chains. (Microbial infection) Acts as phagocytic receptor for bacteria, fungi and other pathogens. Acts as a receptor for Dengue virus envelope protein E (PubMed:18266465). Interacts with hepatitis B virus envelope protein (PubMed:19683778).

Research Area

Immunology

Image Data



Western blot analysis of MRC1 in 293T lysates using Mannose Receptor antibody.