
Product Name: 4E BP1 Rabbit Polyclonal Antibody**Catalog #: APRab00140**

For research use only.

Summary

Description	Rabbit polyclonal Antibody
Host	Rabbit
Application	WB,IHC,ICC/IF,FC,IP
Reactivity	Human,Mouse,Rat
Conjugation	Unconjugated
Modification	Unmodified
Isotype	IgG
Clonality	Polyclonal
Form	Liquid
Concentration	1mg/ml
Storage	Aliquot and store at -20°C (valid for 12 months). Avoid freeze/thaw cycles.
Shipping	Ice bags
Buffer	Rabbit IgG in phosphate buffered saline , pH 7.4, 150mM NaCl, 0.02% sodium azide and 50% glycerol.
Purification	Affinity Chromatography

Application

Dilution Ratio	WB 1:500-1:1000,IHC 1:50-1:100,ICC/IF 1:50-1:200,FC 1:50-1:100,IP 1:20-1:50
Molecular Weight	Calculated MW: 13 kDa; Observed MW: 18 kDa

Antigen Information

Gene Name	EIF4EBP1
Alternative Names	EIF4EBP1; Eukaryotic translation initiation factor 4E-binding protein 1; 4E-BP1; eIF4E-binding protein 1; Phosphorylated heat- and acid-stable protein regulated by insulin 1; PHAS-I
Gene ID	1978
SwissProt ID	Q13541
Immunogen	A synthetic peptide corresponding to target protein

Background

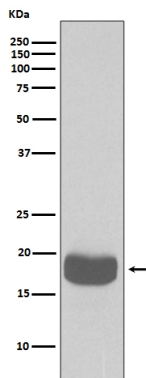
Translation repressor protein 4E-BP1 (also known as PHAS-1) inhibits cap-dependent translation by binding to the translation

initiation factor eIF4E. Hyperphosphorylation of 4E-BP1 disrupts this interaction and results in activation of cap-dependent translation. Both the PI3 kinase/Akt pathway and FRAP/mTOR kinase regulate 4E-BP1 activity.

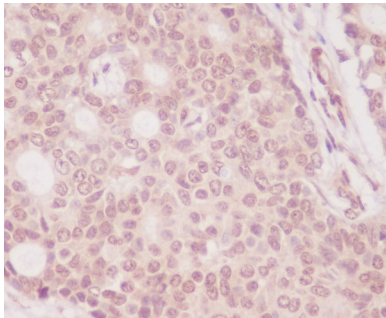
Research Area

Epigenetics and Nuclear Signaling

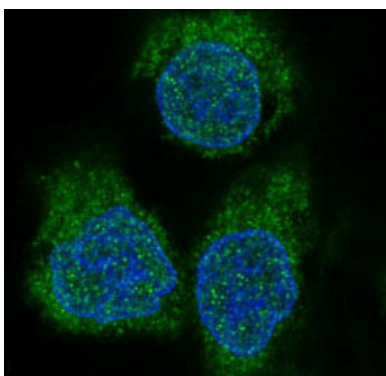
Image Data



Western blot analysis of eIF4EBP1 in K562 lysates using 4E BP1 antibody.



Immunohistochemistry analysis of paraffin-embedded Human breast carcinoma using eIF4EBP1 antibody. High-pressure and temperature Sodium Citrate pH 6.0 was used for antigen retrieval.



Immunofluorescence analysis of 4E BP1 in HeLa using eIF4EBP1 antibody.