
Product Name: E2F1 Rabbit Polyclonal Antibody**Catalog #: APRab00139**

For research use only.

Summary

Description	Rabbit polyclonal Antibody
Host	Rabbit
Application	WB,IHC,ICC/IF,FC,IP
Reactivity	Human,Mouse,Rat
Conjugation	Unconjugated
Modification	Unmodified
Isotype	IgG
Clonality	Polyclonal
Form	Liquid
Concentration	1mg/ml
Storage	Aliquot and store at -20°C (valid for 12 months). Avoid freeze/thaw cycles.
Shipping	Ice bags
Buffer	Rabbit IgG in phosphate buffered saline , pH 7.4, 150mM NaCl, 0.02% sodium azide and 50% glycerol.
Purification	Affinity Chromatography

Application

Dilution Ratio	WB 1:500-1:1000,IHC 1:50-1:100,ICC/IF 1:50-1:200,FC 1:50-1:100,IP 1:20-1:50
Molecular Weight	Calculated MW: 47 kDa; Observed MW: 65 kDa

Antigen Information

Gene Name	E2F1
Alternative Names	E2F1; RBBP3; Transcription factor E2F1; E2F-1; PBR3; Retinoblastoma-associated protein 1; RBAP-1; Retinoblastoma-binding protein 3; RBBP-3; pRB-binding protein E2F-1
Gene ID	1869
SwissProt ID	Q01094
Immunogen	A synthetic peptide of human E2F1

Background

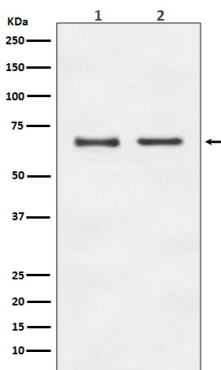
The protein encoded by this gene is a member of the E2F family of transcription factors. The E2F family plays a crucial role in the

control of cell cycle and action of tumor suppressor proteins and is also a target of the transforming proteins of small DNA tumor viruses.

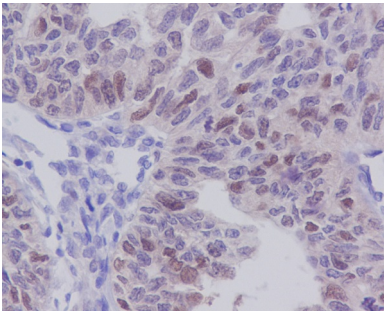
Research Area

Epigenetics and Nuclear Signaling

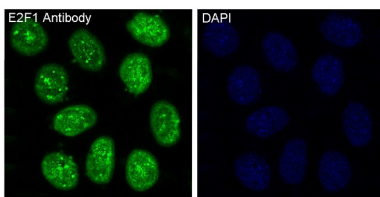
Image Data



Western blot analysis of E2F1 in (1) HeLa lysates; (2) NIH/3T3 lysates using E2F1 antibody.



Immunohistochemistry analysis of paraffin-embedded Human ovary carcinoma using E2F1 antibody. High-pressure and temperature Sodium Citrate pH 6.0 was used for antigen retrieval.



Immunofluorescence analysis of E2F1 in HeLa using E2F1 antibody.