

---

**Product Name: Metabotropic Glutamate Receptor 2 Rabbit Polyclonal Antibody****Catalog #: APRab00138**

For research use only.

**Summary**

<b>Description</b>	Rabbit polyclonal Antibody
<b>Host</b>	Rabbit
<b>Application</b>	WB,IHC,ICC/IF
<b>Reactivity</b>	Human,Mouse,Rat
<b>Conjugation</b>	Unconjugated
<b>Modification</b>	Unmodified
<b>Isotype</b>	IgG
<b>Clonality</b>	Polyclonal
<b>Form</b>	Liquid
<b>Concentration</b>	1mg/ml
<b>Storage</b>	Aliquot and store at -20°C (valid for 12 months). Avoid freeze/thaw cycles.
<b>Shipping</b>	Ice bags
<b>Buffer</b>	Rabbit IgG in phosphate buffered saline , pH 7.4, 150mM NaCl, 0.02% sodium azide and 50% glycerol.
<b>Purification</b>	Affinity Chromatography

**Application**

<b>Dilution Ratio</b>	WB 1:500-1:1000,IHC 1:50-1:100,ICC/IF 1:50-1:200
<b>Molecular Weight</b>	Calculated MW: 96 kDa; Observed MW: 95,200 kDa

**Antigen Information**

<b>Gene Name</b>	GRM2
<b>Alternative Names</b>	GRM2; GPRC1B; MGLUR2; Metabotropic glutamate receptor 2; mGluR2; GRM3; GPRC1C; MGLUR3; Metabotropic glutamate receptor 3; mGluR3
<b>Gene ID</b>	2912
<b>SwissProt ID</b>	Q14416
<b>Immunogen</b>	A synthetic peptide of human Metabotropic Glutamate Receptor 2

**Background**

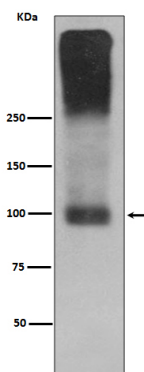
G-protein coupled receptor for glutamate. Ligand binding causes a conformation change that triggers signaling via guanine

nucleotide-binding proteins (G proteins) and modulates the activity of down-stream effectors, such as adenylate cyclase. Signaling inhibits adenylate cyclase activity. May mediate suppression of neurotransmission or may be involved in synaptogenesis or synaptic stabilization.

## Research Area

Neuroscience

## Image Data



Western blot analysis of mGluR2 in mouse brain lysates using Metabotropic Glutamate Receptor 2 antibody.