
Product Name: Stromal Interaction Molecule 1 Rabbit Polyclonal Antibody**Catalog #: APRab00116**

For research use only.

Summary

| | |
|----------------------|--|
| Description | Rabbit polyclonal Antibody |
| Host | Rabbit |
| Application | WB,IHC,IP |
| Reactivity | Human,Mouse,Rat |
| Conjugation | Unconjugated |
| Modification | Unmodified |
| Isotype | IgG |
| Clonality | Polyclonal |
| Form | Liquid |
| Concentration | 1mg/ml |
| Storage | Aliquot and store at -20°C (valid for 12 months). Avoid freeze/thaw cycles. |
| Shipping | Ice bags |
| Buffer | Rabbit IgG in phosphate buffered saline , pH 7.4, 150mM NaCl, 0.02% sodium azide and 50% glycerol. |
| Purification | Affinity Chromatography |

Application

| | |
|-------------------------|---|
| Dilution Ratio | WB 1:500-1:1000,IHC 1:50-1:100,IP 1:20-1:50 |
| Molecular Weight | Calculated MW: 77 kDa; Observed MW: 77 kDa |

Antigen Information

| | |
|--------------------------|---|
| Gene Name | STIM1 |
| Alternative Names | GOK; TAM; TAM1; IMD10; STRMK; D11S4896E |
| Gene ID | 6786 |
| SwissProt ID | Q13586 |
| Immunogen | A synthetic peptide of human Stromal interaction molecule 1 |

Background

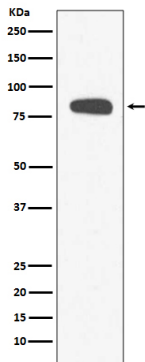
STIM1 is a potential tumor suppressor; defects in STIM1 may cause rhabdomyosarcoma and rhabdoid tumors. STIM1 can either homodimerize or form heterodimers with STIM2. STIM2 possesses a high sequence identity to STIM1 and can function as an

inhibitor of STIM1-mediated plasma membrane store-operated Ca²⁺ entry. However, further investigation is required to elucidate the true physiological function of STIM2.

Research Area

Neuroscience

Image Data



Western blot analysis of Stromal interaction molecule 1 in HeLa lysates using Stromal Interaction Molecule 1 antibody.