

---

**Product Name: ATF5 Rabbit Polyclonal Antibody****Catalog #: APRab00115**

For research use only.

**Summary**

<b>Description</b>	Rabbit polyclonal Antibody
<b>Host</b>	Rabbit
<b>Application</b>	WB,IHC,ICC/IF,IP
<b>Reactivity</b>	Human,Mouse,Rat
<b>Conjugation</b>	Unconjugated
<b>Modification</b>	Unmodified
<b>Isotype</b>	IgG
<b>Clonality</b>	Polyclonal
<b>Form</b>	Liquid
<b>Concentration</b>	1mg/ml
<b>Storage</b>	Aliquot and store at -20°C (valid for 12 months). Avoid freeze/thaw cycles.
<b>Shipping</b>	Ice bags
<b>Buffer</b>	Rabbit IgG in phosphate buffered saline , pH 7.4, 150mM NaCl, 0.02% sodium azide and 50% glycerol.
<b>Purification</b>	Affinity Chromatography

**Application**

<b>Dilution Ratio</b>	WB 1:500-1:1000,IHC 1:50-1:100,ICC/IF 1:50-1:200,IP 1:20-1:50
<b>Molecular Weight</b>	Calculated MW: 31 kDa; Observed MW: 31 kDa

**Antigen Information**

<b>Gene Name</b>	ATF5
<b>Alternative Names</b>	ATF5; ATFX; Cyclic AMP-dependent transcription factor ATF-5; cAMP-dependent transcription factor ATF-5; Activating transcription factor 5; Transcription factor ATFx
<b>Gene ID</b>	22809
<b>SwissProt ID</b>	Q9Y2D1
<b>Immunogen</b>	A synthetic peptide of human ATF5

**Background**

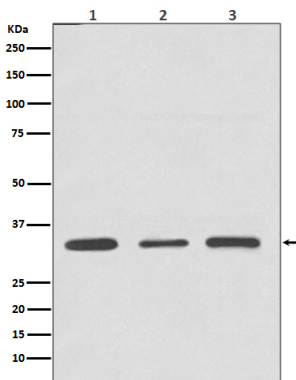
ATF5 or Activating transcription factor 5, binds to cAMP inducible promoters and is involved in gene transcription. This protein

binds the cAMP response element (CRE) (consensus: 5'-GTGACGT[AC][AG]-3'), a sequence present in many viral and cellular promoters. ATF5 plays a role in inhibition of nerve growth factor induced neuronal outgrowth and regulation of neurogenesis.

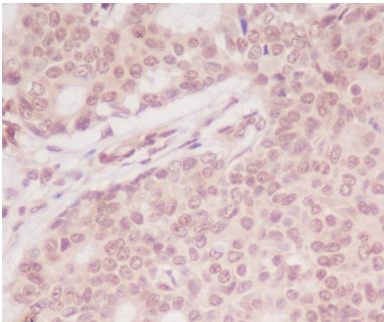
## Research Area

Epigenetics and Nuclear Signaling

## Image Data



Western blot analysis of ATF5 in (1) Jurkat lysates; (2) 3T3 lysates; (2) C6 lysates using ATF5 antibody.



Immunohistochemistry analysis of paraffin-embedded Human breast using ATF5 antibody. High-pressure and temperature Sodium Citrate pH 6.0 was used for antigen retrieval.