

---

**Product Name: MEK3 Rabbit Polyclonal Antibody****Catalog #: APRab00114**

For research use only.

**Summary**

<b>Description</b>	Rabbit polyclonal Antibody
<b>Host</b>	Rabbit
<b>Application</b>	WB,IHC,ICC/IF,FC,IP
<b>Reactivity</b>	Human,Mouse,Rat
<b>Conjugation</b>	Unconjugated
<b>Modification</b>	Unmodified
<b>Isotype</b>	IgG
<b>Clonality</b>	Polyclonal
<b>Form</b>	Liquid
<b>Concentration</b>	1mg/ml
<b>Storage</b>	Aliquot and store at -20°C (valid for 12 months). Avoid freeze/thaw cycles.
<b>Shipping</b>	Ice bags
<b>Buffer</b>	Rabbit IgG in phosphate buffered saline , pH 7.4, 150mM NaCl, 0.02% sodium azide and 50% glycerol.
<b>Purification</b>	Affinity Chromatography

**Application**

<b>Dilution Ratio</b>	WB 1:500-1:1000,IHC 1:50-1:100,ICC/IF 1:50-1:200,FC 1:50-1:100,IP 1:20-1:50
<b>Molecular Weight</b>	Calculated MW: 39 kDa; Observed MW: 39 kDa

**Antigen Information**

<b>Gene Name</b>	MAP2K3
<b>Alternative Names</b>	AW212142; dual specificity mitogen activated protein kinase kinase 3; Dual specificity mitogen activated protein kinase kinase 6; Dual specificity mitogen-activated protein kinase kinase 3; MAP kinase kinase 3; MAP kinase kinase 6; map2k3; MAP2K6; MAPK ERK kinase 3; MAPK/ERK kinase 3; MAPK/ERK kinase 6; MAPKK 3; MAPKK 6; MAPKK3; MAPKK6; MEK 3; MEK 6; MEK3; Mitogen activated protein kinase kinase 3; Mitogen activated protein kinase kinase 6; MKK 3; MKK3; MKK6; mMKK3b; MP2K3_HUMAN; PRKMK 3; PRKMK3; PRKMK6; Protein kinase; mitogen activated; kinase 6 (MAP kinase kinase 6); protein kinase; mitogen-activated; kinase 3; SAPK kinase 2; SAPKK 2; SAPKK 3; SAPKK-2; SAPKK2; SAPKK3; Stress

activated protein kinase kinase 2; Stress activated protein kinase kinase 3; Stress-activated protein kinase kinase 2.

<b>Gene ID</b>	5606
<b>SwissProt ID</b>	P46734
<b>Immunogen</b>	Recombinant protein of human MEK3

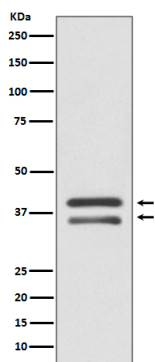
## Background

Dual specificity kinase. Is activated by cytokines and environmental stress in vivo. Catalyzes the concomitant phosphorylation of a threonine and a tyrosine residue in the MAP kinase p38.

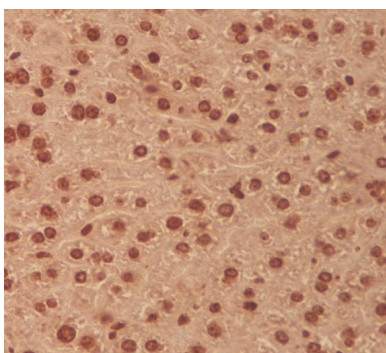
## Research Area

Signal Transduction

## Image Data



Western blot analysis of MEK3 in HepG2 lysates using MEK3 antibody.



Immunohistochemistry analysis of paraffin-embedded Human liver using MEK3 antibody. High-pressure and temperature Sodium Citrate pH 6.0 was used for antigen retrieval.