
Product Name: MEK3/MEK6 Rabbit Polyclonal Antibody**Catalog #: APRab00113**

For research use only.

Summary

Description	Rabbit polyclonal Antibody
Host	Rabbit
Application	WB,IHC,ICC/IF,FC,IP
Reactivity	Human,Mouse,Rat
Conjugation	Unconjugated
Modification	Unmodified
Isotype	IgG
Clonality	Polyclonal
Form	Liquid
Concentration	1mg/ml
Storage	Aliquot and store at -20°C (valid for 12 months). Avoid freeze/thaw cycles.
Shipping	Ice bags
Buffer	Rabbit IgG in phosphate buffered saline , pH 7.4, 150mM NaCl, 0.02% sodium azide and 50% glycerol.
Purification	Affinity Chromatography

Application

Dilution Ratio	WB 1:500-1:1000,IHC 1:50-1:100,ICC/IF 1:50-1:200,FC 1:50-1:100,IP 1:20-1:50
Molecular Weight	Calculated MW: 39,37 kDa; Observed MW: 39,37 kDa

Antigen Information

Gene Name	MAP2K3/MAP2K6
Alternative Names	MEK6; MKK6; MAPKK6; PRKMK6; SAPKK3; MAP2K6; MEK3; MAP kinase kinase 3; MAPKK3; MAPK/ERK kinase 3
Gene ID	5606/5608
SwissProt ID	P46734/P52564
Immunogen	

Background

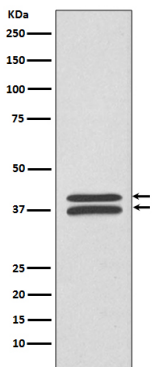
Dual specificity kinase. Is activated by cytokines and environmental stress in vivo. Catalyzes the concomitant phosphorylation

of a threonine and a tyrosine residue in the MAP kinase p38.

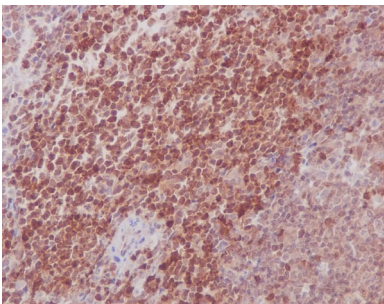
Research Area

Signal Transduction

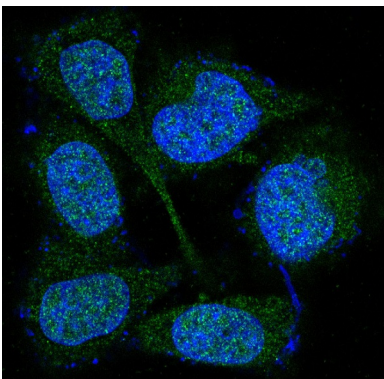
Image Data



Western blot analysis of MEK3/MEK6 in HeLa lysates using MEK3/MEK6 antibody.



Immunohistochemistry analysis of paraffin-embedded mouse spleen using MEK3/MEK6 antibody. High-pressure and temperature Sodium Citrate pH 6.0 was used for antigen retrieval.



Immunofluorescence analysis of MEK3/MEK6 in HeLa using MEK3/MEK6 antibody.